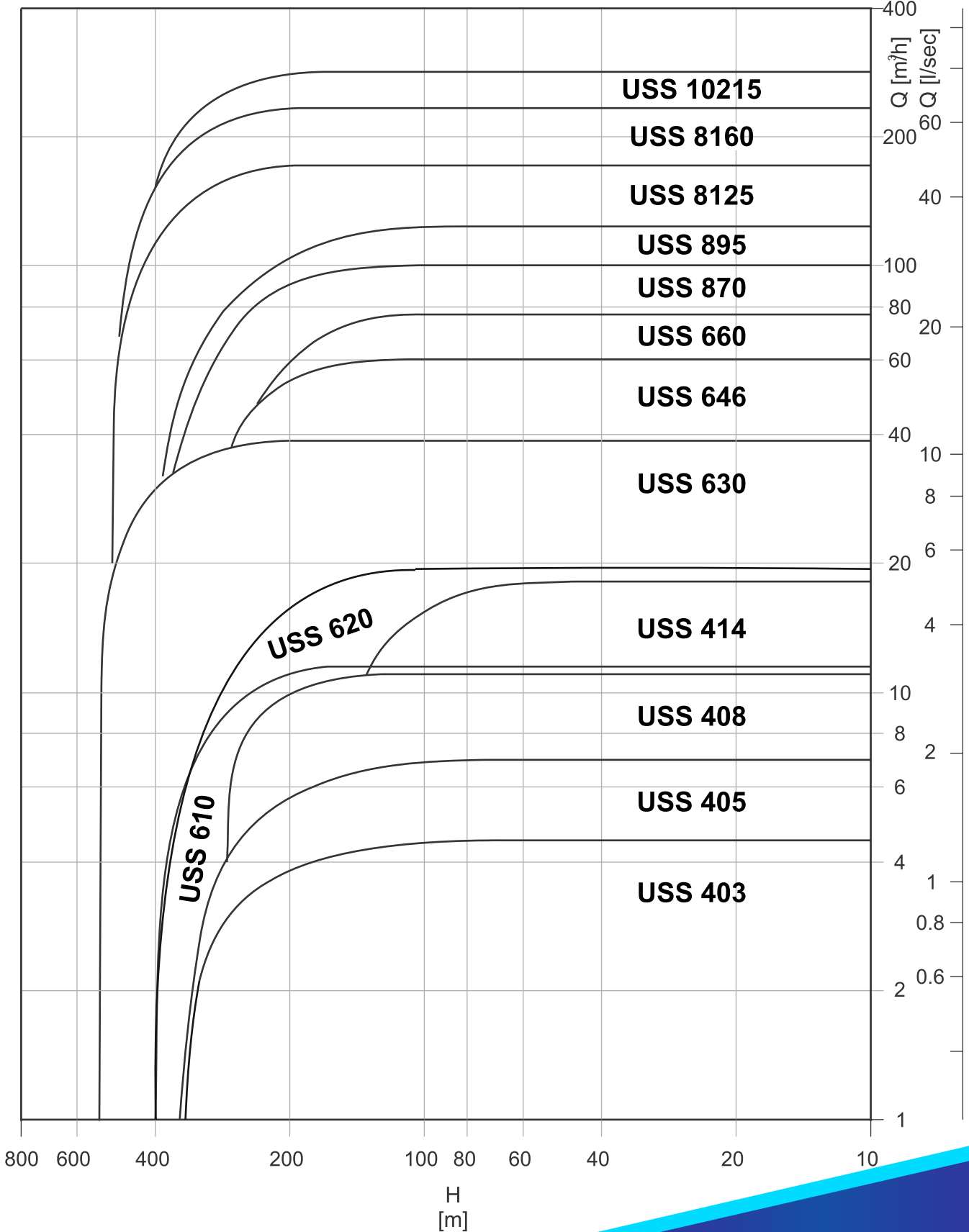


Pompa Tanımlama / Pump Type key

ULUSOY SUBMERSIBLE PUMP	USS	4	03	/	9
Anma çapı Nominal diameters					
Fan tipi Impeller type					
Kademe sayısı Stage number					

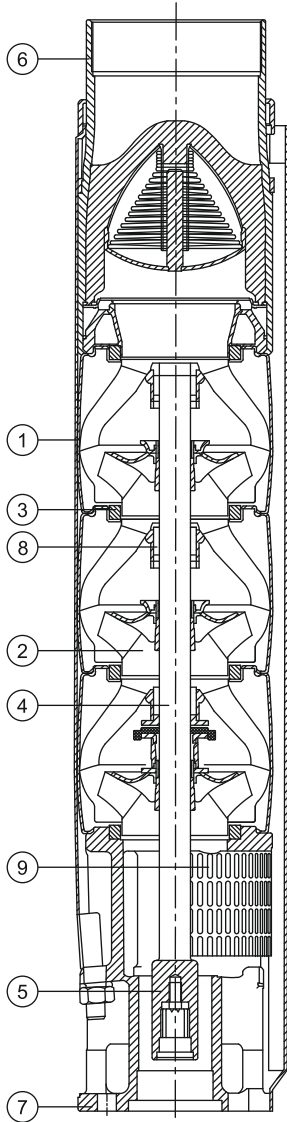
Performans Aralığı / Performance Range



Teknik Bilgi / Technical Data

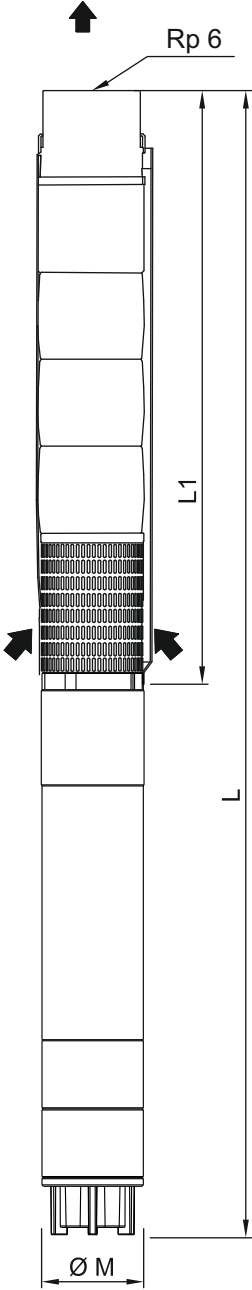
Radyal ve Karışık Akışlı 8" - 10" Paslanmaz Çelik Dalgıç Pompa
Radial and Mixed Flow 8" -10" Stainless Steel Submersible Pump

Parça Listesi / Part List



No	Parça Adı /Part Name	Pompa Tipi /Pump Type
		USS 870, USS 895 USS 8125, USS 8160, USS 10215
1	Difüzör /Diffuser	AISI 304
2	Fan /Impeller	
3	Aşınma Halkası /Wear Ring	NBR
4	Mil /Shaft	AISI 431
5	Kaplin / Coupling	AISI 316
6	Çıkış / Delivery Casing	AISI 304
7	Emiş / Suction Case	
8	Yatak Burcu / Bearing Bush	NBR
9	Filtre / Strainer	AISI 304

Fan Tipi <i>Impeller Type</i>	Karışık <i>Mixed</i>	Maks.Randımında H (tek kd.) <i>Max.Flow Rate In H (single stage)</i>	20.7 m
Maks.Randıman <i>Max. Efficiency</i>	79.8%	Maks.Randımında Güç(P2) (tek kd.) <i>Max.Flow Rate In Power (P2)(single stage)</i>	11.45 kW
Maks.Randımında Debi <i>Max.Flow Rate In Efficiency</i>	45 l/s	Maks.Güç(P2) (tek kd.) <i>Max.Power (P2) (single stage)</i>	11.60 kW



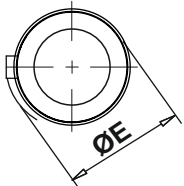
Performans Tablosu / Performance Chart

Pompa Tipi <i>Pump Type</i>	Motor Tipi <i>Motor Type</i>	HP	KW	Nominal Akım <i>Current</i> 380V	Q	n = 2900 rpm					
						I/sec	22.22	33.33	38.89	44.44	55.56
						m ³ /h	80.0	120.0	140.0	160.0	200.0
					I/min	1334	2000	2333	2667	3333	
USS 8160/1	USM 6017	17.5	13.0	29.0	H m	28	23	22	21	16	
USS 8160/2	USM 6035	35.0	26.0	56.0		56	48	45	42	33	
USS 8160/3	USM 8050	50.0	37.0	76.0		84	73	68	63	50	
USS 8160/4	USM 8075	70.0	52.0	103.0		111	97	91	84	67	
USS 8160/5	USM 8085	80.0	59.0	118.0		139	121	113	105	83	
USS 8160/6	USM 8100	100.0	75.0	148.0		167	145	136	126	100	
USS 8160/7	USM 8110	110.0	81.0	160.0		195	170	158	147	117	
USS 8160/8	USM 8125	125.0	92.0	183.0		223	194	181	168	133	
USS 8160/9	USM 10150	150.0	110.0	216.0		251	219	203	189	150	
USS 8160/10	USM 10175	175.0	129.0	251.0		279	243	226	210	167	
USS 8160/11	USM 10175	175.0	129.0	251.0		306	267	248	231	184	
USS 8160/12	USM 10200	200.0	147.0	286.0		334	292	271	252	200	
USS 8160/13	USM 10225	225.0	165.0	319.0		362	316	294	273	218	
USS 8160/14	USM 10225	225.0	165.0	319.0		390	340	316	294	234	
USS 8160/15	USM 10250	250.0	184.0	355.0		418	364	339	315	250	

Ölçüler & Ağırlıklar

Dimensions & Weights

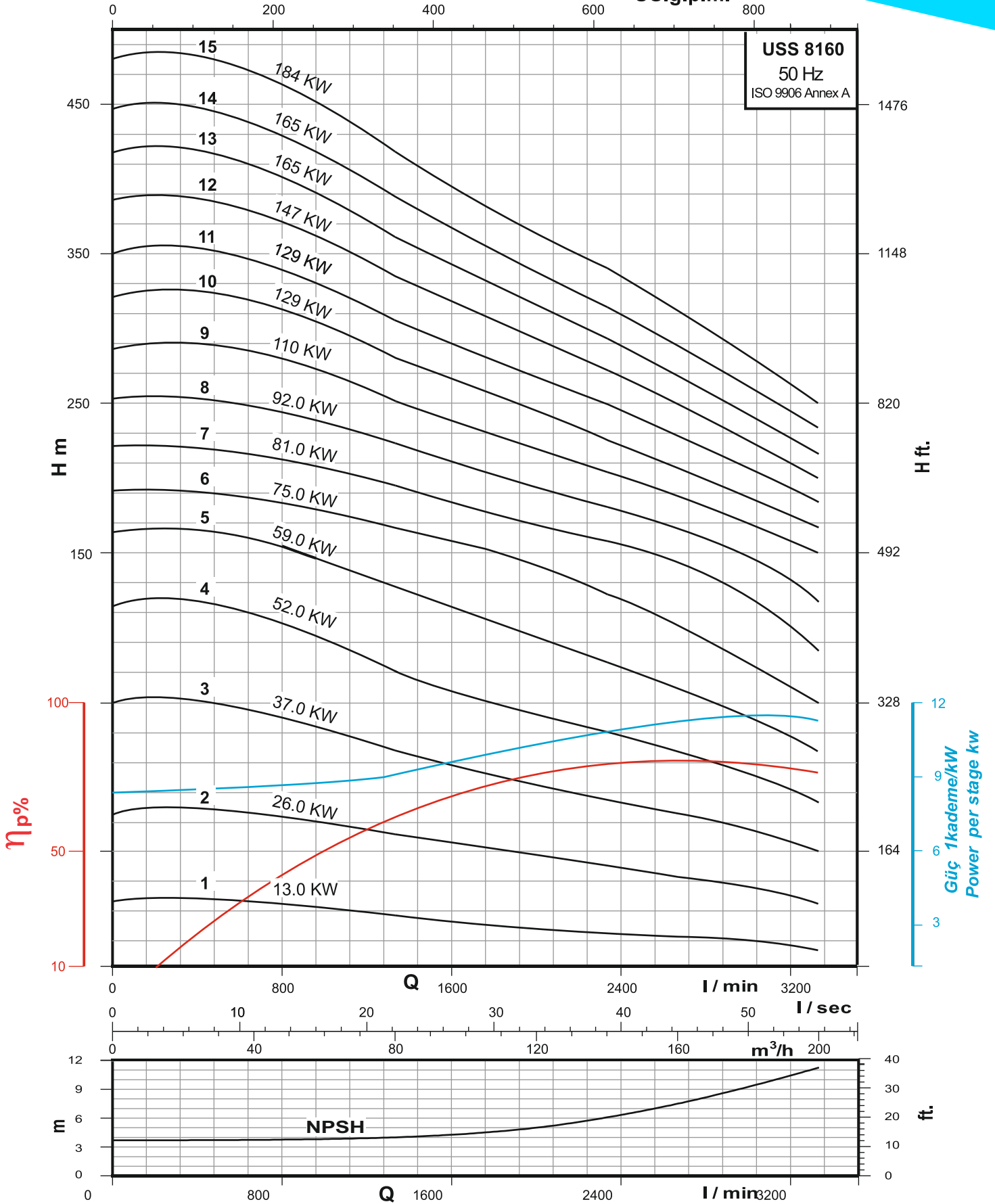
Pompa +Motor <i>Pump + Motor</i>	ØM (mm)	ØE (mm)	Boy <i>Length (mm)</i>		Ağırlık <i>Net Weight (kg)</i>	
			L1	L	Pump	Pump+ Motor
			USS 8160/1 + USM 6017	142	211	651
USS 8160/2 + USM 6035	142	211	807	1950	41.0	141.0
USS 8160/3 + USM 8050	190	218	963	2025	51.0	204.0
USS 8160/4 + USM 8070	190	218	1119	2355	53.0	206.0
USS 8160/5 + USM 8080	190	218	1275	2565	59.0	239.0
USS 8160/6 + USM 8100	190	218	1431	2790	65.0	275.0
USS 8160/7 + USM 8110	190	218	1587	3010	71.0	288.0
USS 8160/8 + USM 8125	190	218	1743	3230	77.0	305.0
USS 8160/9 + USM 10150	240	240	1899	3390	83.0	395.0
USS 8160/10 + USM 10175	240	240	2403	3990	109.0	452.0
USS 8160/11 + USM 10175	240	240	2559	4145	115.0	458.0
USS 8160/12 + USM 10200	240	240	2714	4429	121.0	506.0
USS 8160/13 + USM 10225	240	240	2870	4660	127.0	552.0
USS 8160/14 + USM 10225	240	240	3025	4815	133.0	558.0
USS 8160/15 + USM 10250	240	240	3259	5210	153.0	618.0



Teknik Bilgi / Technical Data
Karışık Akışlı 6" Paslanmaz Çelik Dalgıç Pompa
Mixed Flow 6" Stainless Steel Submersible Pump

USS 8160

US.g.p.m.



Performans eğrileri 15 °C sıcaklıkta, 1 atm. basınç altında, fiziksel değerleri kinematik viskozite $\nu = 1 \text{ mm}^2 / \text{s}$ ve yoğunluk $\rho = 1000 \text{ kg} / \text{m}^3$ olan temiz su baz alınarak hazırlanmıştır.
Performance curves are based on temp. 15 °C , with pressure 1 atm. , physical values kinematic viscosity $\nu = 1 \text{ mm}^2 / \text{sec}$ and density $\rho = 1000 \text{ kg} / \text{m}^3$.
Firmamız , ürünler üzerinde haber vermeksizin değişiklik yapma hakkına sahiptir. We reserve the right to make the changes on products without notice.