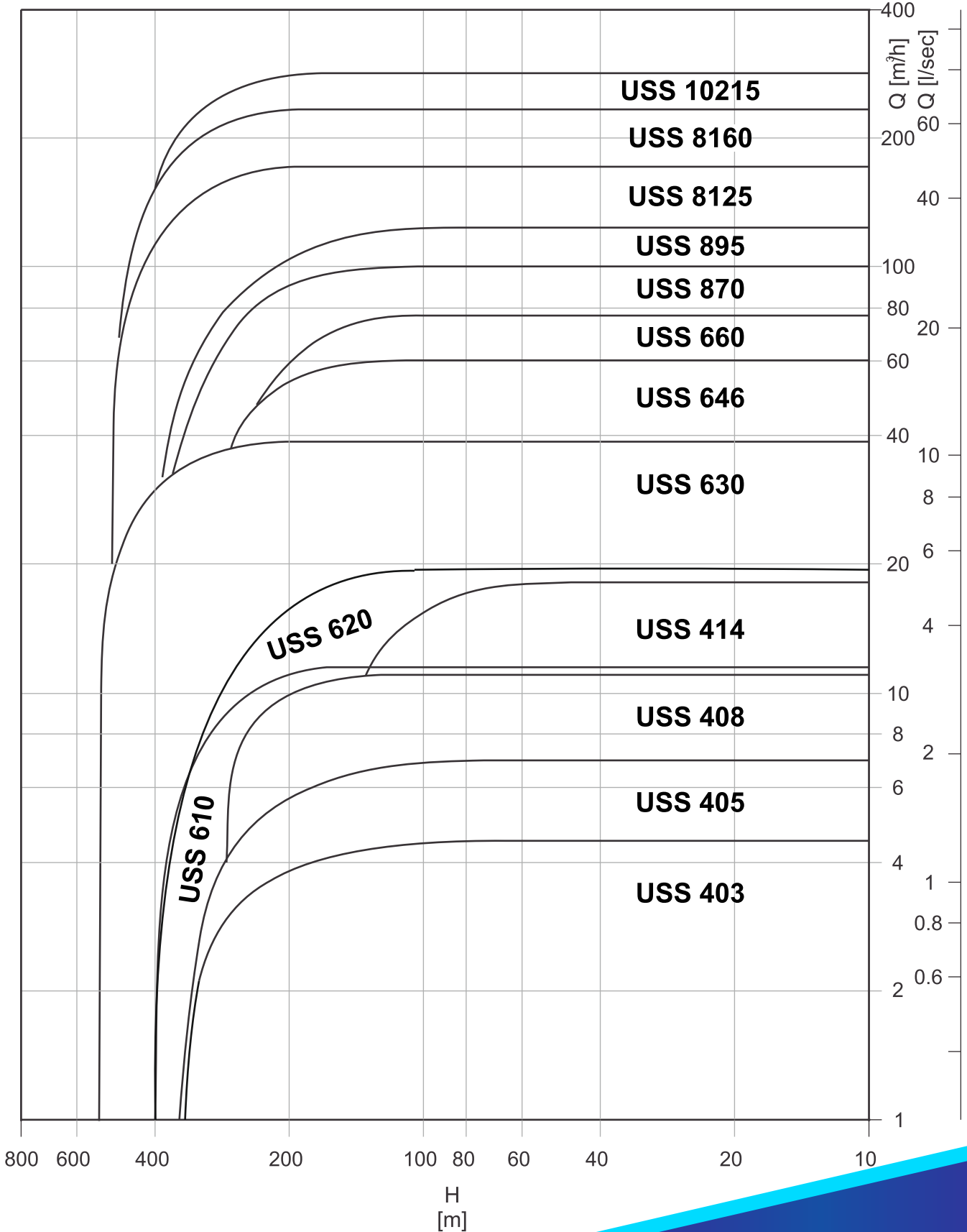


Pompa Tanımlama / Pump Type key

ULUSOY SUBMERSIBLE PUMP	USS	4	03	/	9
Anma çapı Nominal diameters					
Fan tipi Impeller type					
Kademe sayısı Stage number					

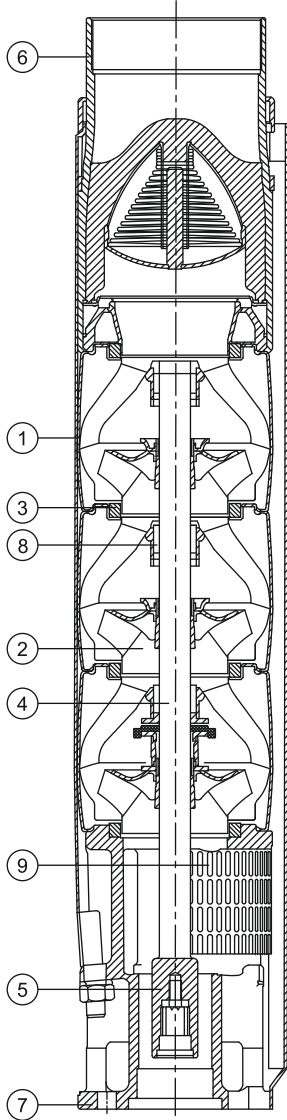
Performans Aralığı / Performance Range



**Teknik Bilgi / Technical Data**

**Radyal ve Karışık Akışlı 8" - 10" Paslanmaz Çelik Dalgıç Pompa**  
**Radial and Mixed Flow 8" - 10" Stainless Steel Submersible Pump**

**Parça Listesi / Part List**



No	Parça Adı /Part Name	Pompa Tipi /Pump Type
		USS 870, USS 895 USS 8125, USS 8160, USS 10215
1	Difüzör /Diffuser	AISI 304
2	Fan /Impeller	
3	Aşınma Halkası /Wear Ring	NBR
4	Mil /Shaft	AISI 431
5	Kaplin / Coupling	AISI 316
6	Çıkış / Delivery Casing	AISI 304
7	Emiş / Suction Case	
8	Yatak Burcu / Bearing Bush	NBR
9	Filtre / Strainer	AISI 304

Fan Tipi <i>Impeller Type</i>	Karışık <i>Mixed</i>	Maks.Randımında H (tek kd.) <i>Max.Flow Rate In H (single stage)</i>	13.8 m
Maks.Randıman <i>Max. Efficiency</i>	75.1 %	Maks.Randımında Güç(P2) (tek kd.) <i>Max.Flow Rate In Power (P2)(single stage)</i>	3.60 kW
Maks.Randımında Debi <i>Max.Flow Rate In Efficiency</i>	20 l/s	Maks.Güç(P2) (tek kd.) <i>Max.Power (P2) (single stage)</i>	3.75 kW

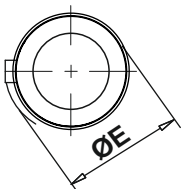
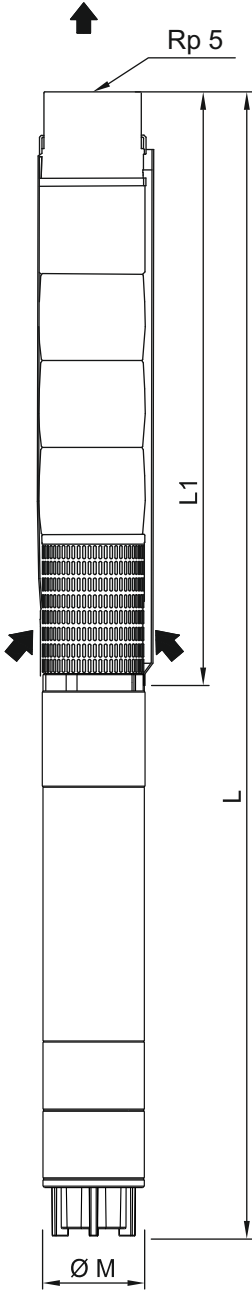
**Performans Tablosu / Performance Chart**

Pompa Tipi <i>Pump Type</i>	Motor Tipi <i>Motor Type</i>	HP	KW	Nominal Akım <i>Current</i> 380V	Q	n = 2900 rpm					
						l/sec m <sup>3</sup> /h	5.55	11.1	16.65	22.2	27.75
							20.0	40.0	60.0	80.0	100.0
						333	667	1000	1334	1667	
USS 870/1	USM 6007	7.50	5.50	13.6	H m	20	17	14	12	7	
USS 870/2	USM 6010	10.0	7.50	17.3		39	33	28	23	14	
USS 870/3	USM 6015	15.0	11.0	25.0		58	50	42	34	20	
USS 870/4	USM 6020	20.0	15.0	33.0		78	68	57	46	27	
USS 870/5	USM 6025	25.0	18.5	42.0		97	85	72	58	34	
USS 870/6	USM 6030	30.0	22.0	49.8		116	102	86	69	41	
USS 870/7	USM 6035	35.0	26.0	56.0		136	119	101	81	48	
USS 870/8	USM 6040	40.0	30.0	63.0		156	137	116	93	55	
USS 870/9	USM 6040	40.0	30.0	63.0		174	152	128	103	62	
USS 870/10	USM 8050	50.0	37.0	76.0		194	171	145	117	68	
USS 870/11	USM 8050	50.0	37.0	76.0		213	186	158	127	75	
USS 870/12	USM 8060	60.0	45.0	90.0		237	209	178	145	88	
USS 870/13	USM 8070	70.0	52.0	103.0		259	228	195	158	98	
USS 870/14	USM 8070	70.0	52.0	103.0		278	245	209	170	104	
USS 870/15	USM 8080	80.0	59.0	118.0		297	261	222	181	110	
USS 870/16	USM 8080	80.0	59.0	118.0		318	280	239	194	120	
USS 870/17	USM 8090	90.0	66.0	134.0		337	298	253	207	125	
USS 870/18	USM 8090	90.0	66.0	134.0		355	313	267	217	132	
USS 870/19	USM 8100	100.0	75.0	148.0		375	332	282	230	140	
USS 870/20	USM 8100	100.0	75.0	148.0		395	349	297	240	146	

**Ölçüler & Ağırlıklar**

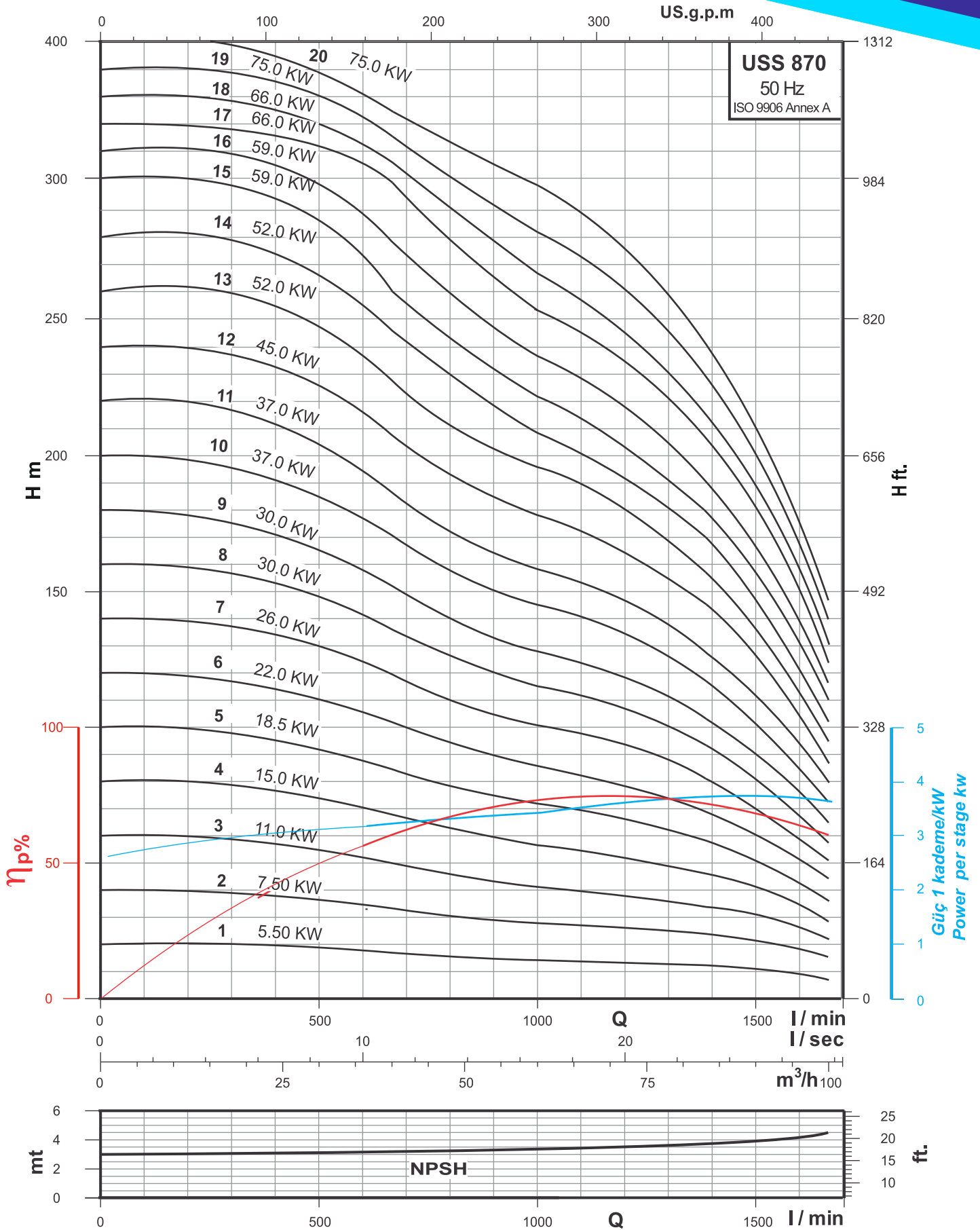
**Dimensions & Weights**

Pompa +Motor <i>Pump + Motor</i>	ØM (mm)	ØE (mm)	Boy <i>Length (mm)</i>		Ağırlık <i>Net Weight (kg)</i>	
			L1	L	Pump	Pump+ Motor
USS 870/1 + USM 6007	142	178	618	1273	19.5	69.5
USS 870/2 + USM 6010	142	178	746	1461	26.0	76.0
USS 870/3 + USM 6015	142	178	874	1669	29.5	93.5
USS 870/4 + USM 6020	142	178	1003	1923	33.5	109.5
USS 870/5 + USM 6025	142	178	1131	2146	37.0	123.0
USS 870/6 + USM 6030	142	178	1259	2354	41.0	136.0
USS 870/7 + USM 6035	142	178	1387	2532	44.5	144.5
USS 870/8 + USM 6040	142	178	1515	2760	48.5	157.5
USS 870/9 + USM 6040	142	178	1643	2888	51.5	160.5
USS 870/10 + USM 8050	190	178	1771	2831	56.0	209.0
USS 870/11 + USM 8050	190	178	1914	2874	59.0	212.0
USS 870/12 + USM 8060	190	178	2043	3193	63.0	223.0
USS 870/13 + USM 8070	190	178	2172	3407	67.0	239.0
USS 870/14 + USM 8070	190	178	2300	3535	71.0	243.0
USS 870/15 + USM 8080	190	178	2429	3719	74.0	254.0
USS 870/16 + USM 8080	190	178	2557	3847	78.0	258.0
USS 870/17 + USM 8090	190	178	2685	4005	82.0	271.0
USS 870/18 + USM 8090	190	178	2814	4134	86.0	275.0
USS 870/19 + USM 8100	190	178	2942	4302	89.0	299.0
USS 870/20 + USM 8100	190	178	3070	4430	93.0	303.0



**Teknik Bilgi / Technical Data**  
**Karışık Akışlı 8" Paslanmaz Çelik Dalgıç Pompa**  
**Mixed Flow 8" Stainless Steel Submersible Pump**

**USS 870**



Performans eğrileri 15 °C sıcaklıkta, 1 atm. basınç altında, fiziksel değerleri kinematik viskozite  $\nu = 1 \text{ mm}^2 / \text{s}$  ve yoğunluk  $\rho = 1000 \text{ kg} / \text{m}^3$  olan temiz su baz alınarak hazırlanmıştır.  
Performance curves are based on temp. 15 °C, with pressure 1 atm., physical values kinematic viscosity  $\nu = 1 \text{ mm}^2 / \text{sec}$  and density  $\rho = 1000 \text{ kg} / \text{m}^3$ .  
Firmamız, ürünler üzerinde haber vermeksizin değişiklik yapma hakkına sahiptir. We reserve the right to make the changes on products without notice.